



6 WATT

Single & Dual Output

Regulated
Wide Input (4:1)
DC/DC Converters



FEATURES

- Extra Wide (4:1) Input Voltage Range
- Output Current up to 1500 mA
- SIP Package 0.86" X 0.36" X 0.44"
- Fixed Switching Frequency
- Input/Output Isolation up to 3000 Vdc
- Continuous Short Circuit Protection
- External On/Off Control
- UL60950-1, EN60950-1, IEC60950-1 CE Mark
- RoHS Compliant to EU Directive 2011/65/EU

SWB6 Series

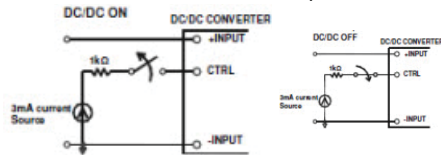
Specifications

INPUT

Voltage Range	24VDC nominal input.....9-36VDC 48VDC nominal input.....18 -75VDC
Input Filter	Capacitor type
Input Surge Voltage	24VDC Input.....50VDC 1sec, max. 48VDC input.....100VDC 1sec, max.
Input Reflected Ripple Current	24VDC nominal input.....20mA _{p-p} 48VDC nominal input.....20mA _{p-p}

Start up Time	constant resistive load.....	Power Up Remote On/Off	30mS
---------------------	------------------------------	------------------------------	------

Remote On/Off	Referenced to -INPUT pin and CTRL pin applied current	DC-DC On.....Open or high impedance DC-DC Off.....2.0min., 3.0typ., 4.0max.	Remote off input current	1.0mA
---------------	---	--	--------------------------------	-------



OUTPUT

Output Power	6 Watts max.
Voltage Accuracy	±1%
Line Regulation	LL to HL at Full Load..... ±0.2%
Load Regulation	Single.....No Load to Full Load..... ±0.5% Dual.....No Load to Full Load..... ±1%
Ripple and Noise 20MHz band width.....	See table
Temperature Coefficient	±0.2% / °C, max.
Transient Response recovery Time	25% load step change.....250µS
Overload Protection.....	% of I _{out} rated, hiccup mode
Short Circuit Protection.....	Continuous, automatic recovery

See next page for additional specifications.



GENERAL

Efficiency.....See table
Standard 1600Vdc, min. 1 minute
Input to Output.....Suffix "H" 3000Vdc, min. 1 minute
 Isolation VoltageSuffix "M" 1600Vdc, min. 1 minute
Input (Output) to Case..... Suffix "M" 1000Vdc, min. 1 minute
 Isolation Resistance500Vdc, GΩ
Standard.....50pF, max.
 Isolation CapacitanceSuffix "H".....50pF, max.
Suffix "M".....50pF, max.
 Switching Frequency522kHz, min., 580kHz typ., 638kHz max.
 Safety ApprovalsIE60950-1, UL60950-1, EN60950-1
Standard.....Non-conductive black plastic
 Case MaterialSuffix "H".....Non-conductive black plastic
Suffix "M".....Copper
 Base MaterialNone
 Potting MaterialSilicon (UL94-V0)
 Dimensions0.86 x 0.36 x 0.44 inches
(21.8 x 9.1 x 11.2 mm)
Standard.....4.8g (0.17 oz.)
 WeightSuffix "H".....4.8g (0.17 oz.)
Suffix "M".....5.9g (0.21 oz.)
 MTBF BELLCORE TW-NWT-000332 Case 1:50% Stress, Ta=40°C..... 3.381 x 10⁵ hrs
 MIL-HDBK-217F Ta=25°C, Full load (GB controlled environment).... 8.408 x 10⁵ hrs

ENVIRONMENTAL

Operating Ambient Temperature.....-40°C - +85°C
 Storage Temperature Range.....-55°C - +125°C
 Thermal Shock.....MIL-STD-810F
 Vibration.....MIL-STD-810F
 Relative Humidity.....5% to 95% RH

EMC CHARACTERISTICS

EMI (Note 1).....EN55022.....Class A
±8KV
 ESD.....EN61000-4-2 ...Air Contact.....Perf. Criteria A
±6KV
 Radiated Immunity..... EN61000-4-320 V/mPerf. Criteria A
 Fast Transient (Note 2)..... EN61000-4-4±2KV.....Perf. Criteria A
 Surge (Note 2)..... EN61000-4-5±2KV.....Perf. Criteria A
 Conducted Immunity EN61000-4-610Vr.m.s.....Perf. Criteria A

SELECTION GUIDE

Input Voltage Range	Output Voltage	Output Current		Output Ripple & Noise	Input Current	Efficiency (%)	Model Number	Capacitor Load max.
		Min. load	Full load					
9-36 Vdc	3.3 Vdc	0mA	1500mA	50mVp-p	4mA	81	SWB6-24S33	4700µF
9-36 Vdc	5 Vdc	0mA	1200mA	75mVp-p	4mA	84	SWB6-24S5	2200µF
9-36 Vdc	9 Vdc	0mA	666mA	75mVp-p	4mA	86	SWB6-24S9	1400µF
9-36 Vdc	12 Vdc	0mA	500mA	100mVp-p	4mA	87	SWB6-24S12	1100µF
9-36 Vdc	15 Vdc	0mA	400mA	100mVp-p	4mA	88	SWB6-24S15	1000µF
9-36 Vdc	24 Vdc	0mA	250mA	100mVp-p	4mA	87	SWB6-24S24	470µF
18-75 Vdc	3.3 Vdc	0mA	1500mA	50mVp-p	4mA	81	SWB6-48S33	4700µF
18-75 Vdc	5 Vdc	0mA	1200mA	75mVp-p	4mA	84	SWB6-48S5	2200µF
18-75 Vdc	9 Vdc	0mA	666mA	75mVp-p	4mA	85	SWB6-48S9	1400µF
18-75 Vdc	12 Vdc	0mA	500mA	100mVp-p	4mA	87	SWB6-48S12	1100µF
18-75 Vdc	15 Vdc	0mA	400mA	100mVp-p	4mA	87	SWB6-48S15	1000µF
18-75 Vdc	24 Vdc	0mA	250mA	100mVp-p	4mA	87	SWB6-48S24	470µF
9-36 Vdc	+/-5 Vdc	0mA	+/-600mA	75mVp-p	6mA	84	SWB6-24-5	+/-1400µF
9-36 Vdc	+/-12 Vdc	0mA	+/-250mA	100mVp-p	6mA	87	SWB6-48-12	+/-660µF
9-36 Vdc	+/-15 Vdc	0mA	+/-200mA	100mVp-p	8mA	87	SWB6-24-15	+/-470µF
18-75 Vdc	+/-5 Vdc	0mA	+/-600mA	75mVp-p	6mA	84	SWB6-48-5	+/-1400µF
18-75 Vdc	+/-12 Vdc	0mA	+/-250mA	100mVp-p	6mA	87	SWB6-48-12	+/-660µF
18-75 Vdc	+/-15 Vdc	0mA	+/-200mA	100mVp-p	8mA	87	SWB6-48-15	+/-470µF

Notes:

1. The SWB6 Series meets EN55022 with external filter.
2. An external input filter capacitor is required if the module has to meet EN61000-4-4, EN61000-4-5. The suggested Polytron filter: TBD.

Caution: This power module is not internally fused. An input line fuse must always be used.

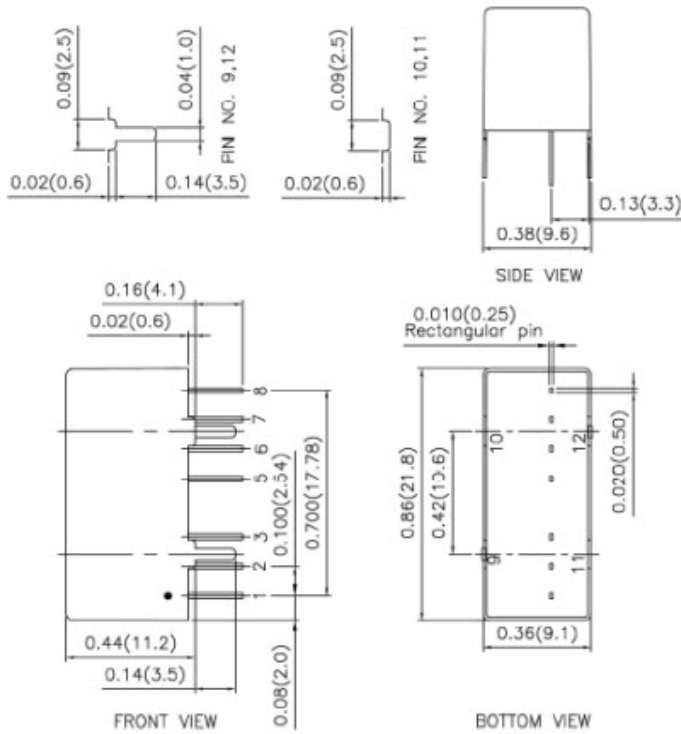
See next page for mechanical specifications.



POLYTRON DEVICES, Inc.

P.O. Box 398, Paterson, New Jersey 07544 U.S.A.
 Tel: (973)345-5885 FAX: (973)345-1264 • Email: sales@polytrondevices.com • www.polytrondevices.com

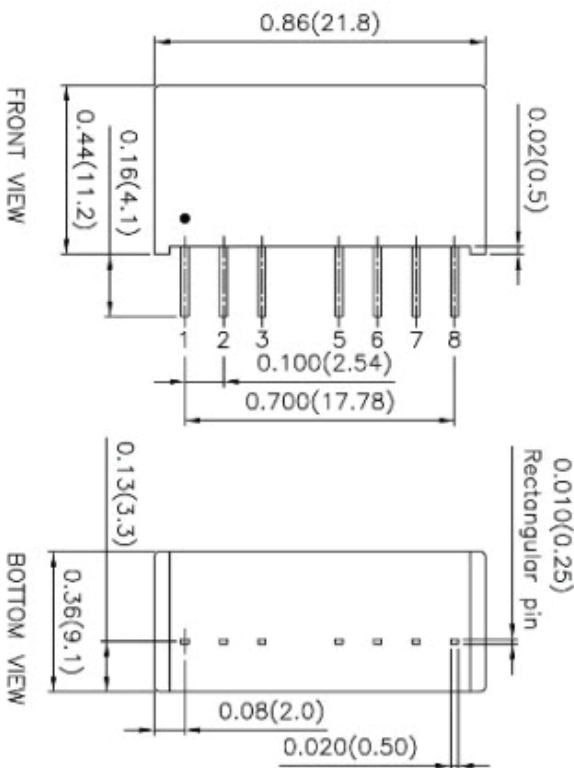
Mechanical Drawing (Metal Case):



PIN CONNECTION		
PIN	SINGLE	DUAL
1	-INPUT	-INPUT
2	+INPUT	+INPUT
3	CTRL	CTRL
5	NC	NC
6	+OUTPUT	+OUTPUT
7	-OUTPUT	COMMON
8	NC	-OUTPUT
9	CASE	CASE
10	STAND OFF	STAND OFF
11	STAND OFF	STAND OFF
12	CASE	CASE

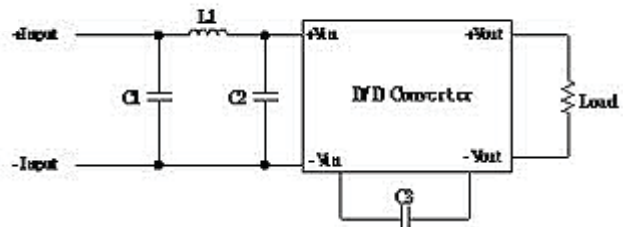
1. All dimensions in inches (mm)
2. Tolerance: X.XX±0.02 (X.X±0.5)
X.XXX±0.01 (X.XX±0.25)
3. Pin pitch tolerance: ±0.01 (0.25)
4. Pin dimension tolerance: ±0.004 (0.1)

Mechanical Drawing (Plastic Case):



1. All dimensions in inches (mm)
2. Tolerance: X.XX±0.02 (X.X±0.5)
X.XXX±0.01 (X.XX±0.25)
3. Pin pitch tolerance: ±0.01 (0.25)
4. Pin dimension tolerance: ±0.004 (0.1)

Recommended EMI Filter:



Recommended Filter for EN55022 Class A Compliance

The components used in the above figure, together with the manufacturers' part numbers for these components, are as follows:

	C1 & C2	C3 & C4	L1
24 Vdc In	10µF/50V 1210 MLCC	331pF/3KV 1808 MLCC	10µH 0504 SMD Inductor PMD-047
48 Vdc In	2.2µF/100V 1812 MLCC	331pF/3KV 1808 MLCC	15µH 0504 SMD Inductor PMD-089

PIN CONNECTION		
PIN	SINGLE	DUAL
1	-INPUT	-INPUT
2	+INPUT	+INPUT
3	CTRL	CTRL
5	NC*/NO PIN**	NC*/NO PIN**
6	+OUTPUT	+OUTPUT
7	-OUTPUT	COMMON
8	NC	-OUTPUT

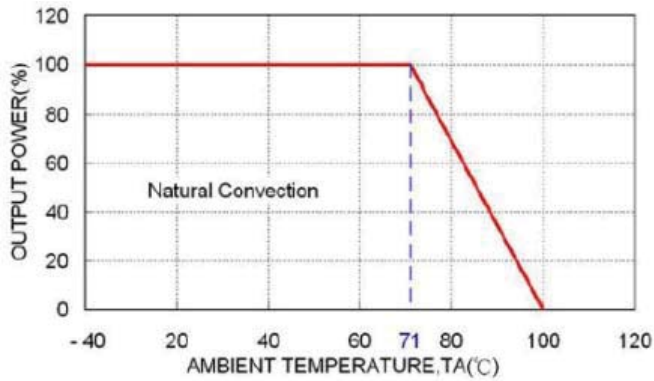
*NC pin for standard.
**NO pin for 3KV isolation. (P/N suffix "H")



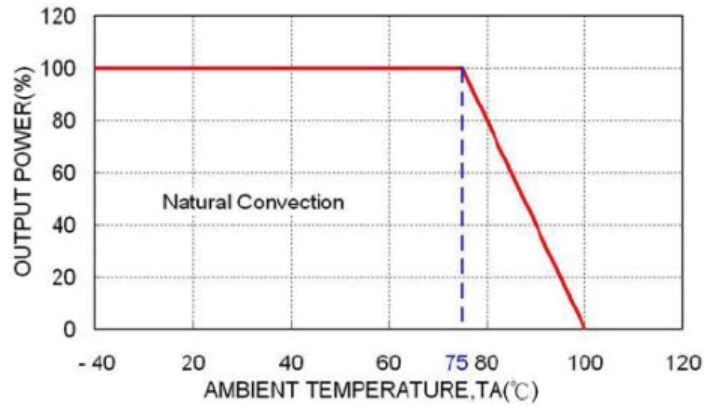
POLYTRON DEVICES, Inc.

P.O. Box 398, Paterson, New Jersey 07544 U.S.A.

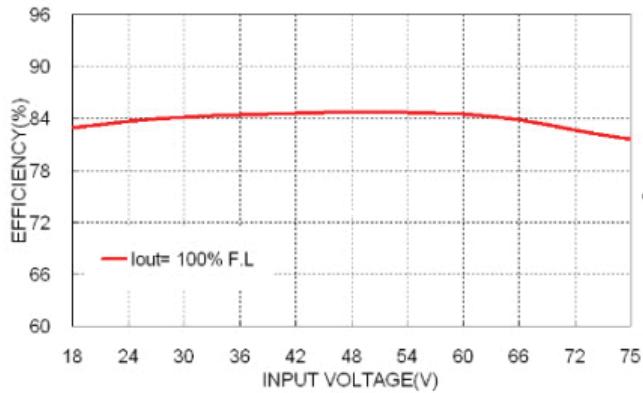
Tel: (973)345-5885 FAX: (973)345-1264 • Email: sales@polytrondevices.com • www.polytrondevices.com



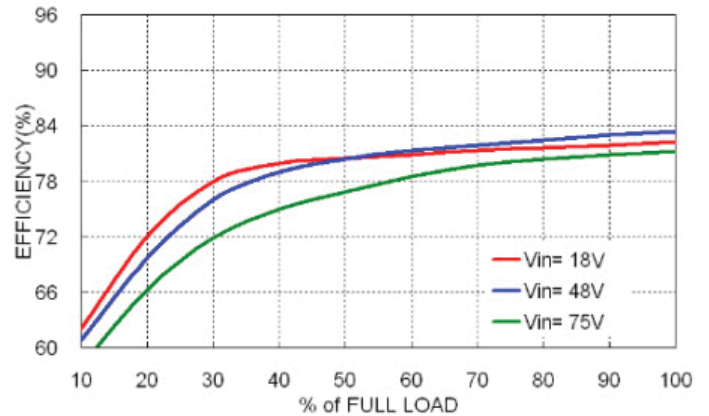
SWB6-48S5 Derating Curve



SWB6-48S5-M Derating Curve



SWB6-48S5 Efficiency VS Input Voltage



SWB6-48S5 Efficiency VS Output Load

